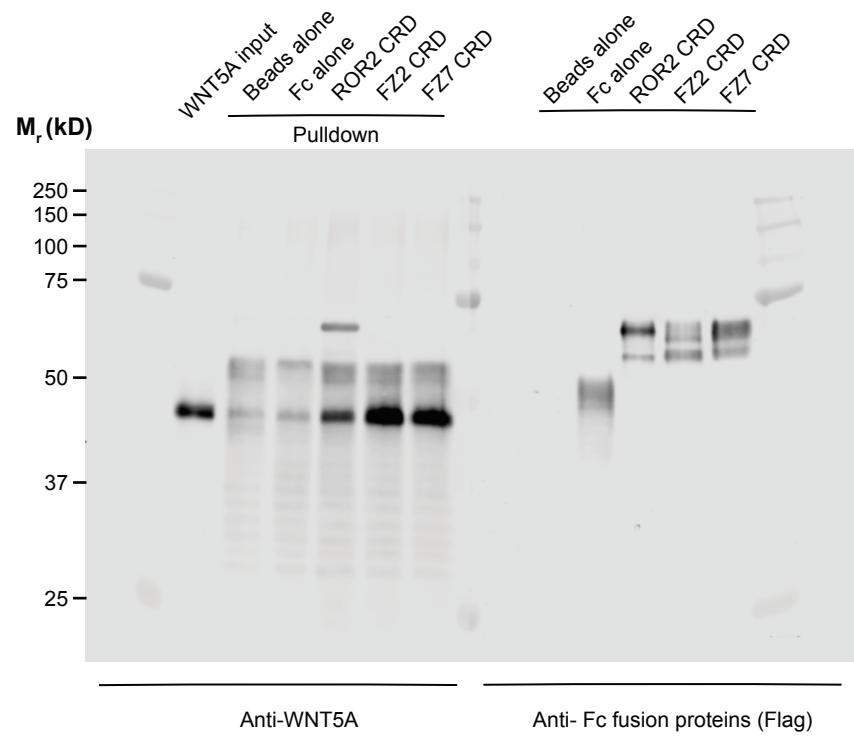


Figure 4A
Uncropped blot with labels



***The upper band in the ROR2 CRD lane of the anti-WNT5A panel is from a cross-reactivity of the anti-WNT5A antibody toward the ROR2 CRD. In an independent experiment in which we blotted ROR2 CRD-Kr with the same anti-WNT5A antibody, we observed the same antibody cross-reactivity at the exact molecular weight of the ROR2 CRD-Kr protein.